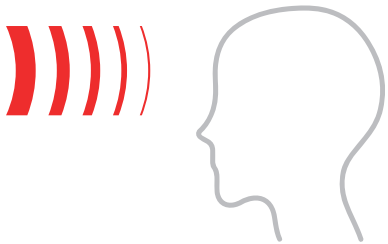


## PROTECTION STARTS AT RECEPTION

According to the World Health Organization (WHO) and Robert Koch Institute (RKI), one of the most important symptoms of the Corona-virus, as well as many other diseases, is a fever (e.g. 87.9% of Covid-19 cases). Core temperature is used for precise testing; however, in public spaces, the surface temperature of the forehead is measured.

Handheld devices require personnel and also physical proximity to the person being measured, which conflicts with social distancing policies.

Monitoring and gate entry points demand significant budgets.



)))) Contactless measurement of forehead body temperature

)))) Easy & wireless installation thanks to battery operation

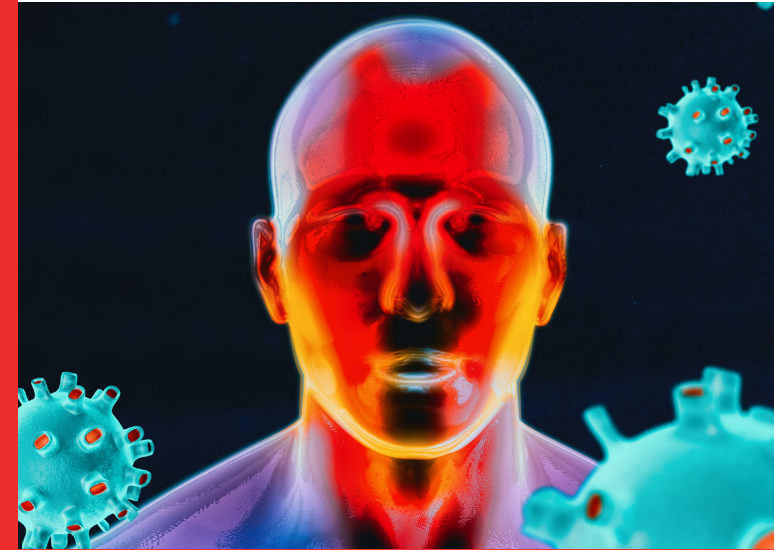
)))) No configuration necessary

)))) Social Distancing

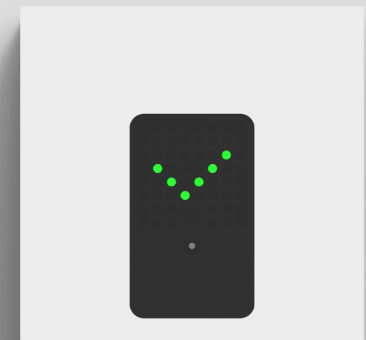
**pikkerton GmbH**  
Wohlrabadamm 16  
13629 Berlin

Fon +49 30 3300724-0  
Mail [info@pikkerton.com](mailto:info@pikkerton.com)

[www.pikkerton.com](http://www.pikkerton.com)  
[www.instamon.eu](http://www.instamon.eu)



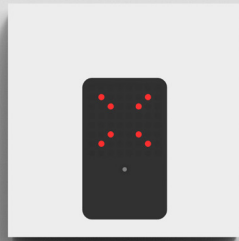
## PROTECTION STARTS AT RECEPTION



## THE SENSOR PRINCIPLE – CONTACTLESS & SAFE

INSTAMON SAFE ENTRY emits no energy at all during the measuring process. It scans the forehead temperature through simply detecting heat radiation emanating from the human body.

The device contains a highly sensitive multi-pixel infrared sensor rather than a camera. The person is guided to an optimal measuring point by means of a smart user control. Manipulation attempts such as deliberate, excessive movements during the measurement are detected and an alarm triggered.



## STANDALONE OR CONNECTED – BUT SECURE (GDPR)

INSTAMON SAFE ENTRY operates completely independently and signals the result of the measurement directly to the user. This operating mode is 100% compliant with GDPR. The device has an optional acoustic signal generator and can also be connected to an external system via 2 small relays that enables it to be connected to lighting or door control systems, for example.

## MOUNTING – WIRELESS & SIMPLE

INSTAMON SAFE ENTRY can be easily wall mounted or fixed to any steel angle, depending on the height of the user. No cables are required - the batteries in the device allow years of reliable operation.

## TRUE INNOVATION FOR OPTIMAL RESULTS

### Daytime-dependent body temperatures taken into account

In general, a person's body temperature increases by approximately 0.6°C through the course of a day. Measurements using fixed, non-adjustable limits can therefore lead to the incorrect interpretation of results. INSTAMON SAFE ENTRY contains a precise clock and readjusts temperature limits as required.

### Recognition of glasses

Smart measurement analysis algorithms detect when a person is wearing glasses and visually or acoustically prompts the wearer to remove them, ensuring high measurement accuracy.

### Acclimatisation in winter

Cold temperatures in winter are detected by smart measurement analysis. If a person has been in the cold for too long before being measured, a visual or acoustic prompt asks them to acclimatise for a few minutes so that the measurement can be repeated, giving a correct result.

Made in Germany

## TECHNICAL SPECIFICATIONS

Dimensions [mm]	180 x 180 x 35
Material	Anodised aluminium
Options	2 output relays and 1 potential-free input for connection to external systems
Sensor principle	Passive infrared
Measurement: accuracy of forehead body temperature [°C], duration	Typ. <0.3, 0.25 after positioning
Person recognition/control	Automatic & feedback for the user via LEDs
Feedback measurement	Optical, optionally acoustic, optionally via 2 relays
Power supply	Battery operated, 1-4x 3.6V Li AA, max. 10 years or 50,000 measurements
Connect-Modul (opt.)	Power Supply with wide input voltage 5-36V, 2x relay contacts 48V/1A, 1x dry contact (input)
Connect-Modul+ (opt.)	NB-IoT "Narrowband-IoT". mobile radio with integrated SIM card

## IN YOUR CORPORATE DESIGN

Entrance areas represent your company, authority or institution. With this in mind, the device can be colour-matched as well as branded with your logo. Simply contact us for more information.