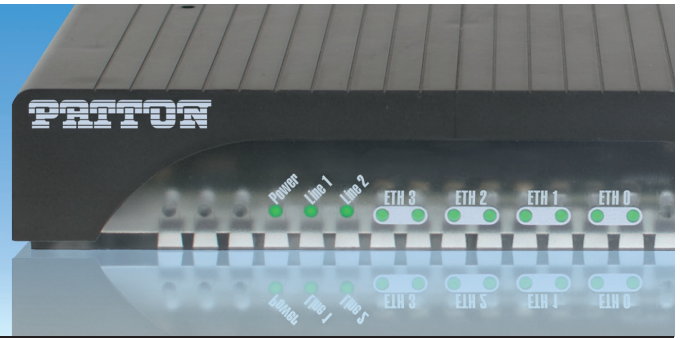


OnSite™ EFM CPE

Model OS2300



The Model OS2300 is a low cost, manageable and software upgradeable G.SHDSL.bis EFM CPE designed for service providers needing transparent network connectivity.

Line Rates up to 15.3 Mbps per pair
Get even more bandwidth by bonding 2 pairs for a symmetrical 30-Mbps link.

4 x 10/100 Ethernet Interfaces
Connects multiple network-enabled devices

Software Upgradeable
Software upgrades make it easy to keep the OnSite EFM CPE in service for years

Plug 'n' Play
Just plug them in and the link comes up in seconds. Set the unit to use handshaking and the selection of optimal link speeds can also be done automatically.

Connect point-to-point or to a DSLAM

The OS2300 can be used back-to-back or with any G.BIS compliant third-party or Patton DSLAM.

Patton's Model OS2300 G.SHDSL.bis OnSite EFM CPE is the perfect choice for users or service providers who need high-speed dedicated network connections. Based on the ITU and ETSI G.SHDSL G.991.2 standard, the OS2300 enables providers to extend their reach-and-range by delivering rate-adaptive nx64 symmetrical speeds up to 15.3 Mbps over a single pair of wires. If you need even more bandwidth, the OS2300 can bond as many as two pairs (4 wires) for up to 30 Mbps.

The OS2300 offers easy installation. For very basic configurations users can take advantage of a DIP switch located on the bottom of the unit. For more configuration options we offer CLI via Console/VT-100 or Telnet/SSH, and HTTP web based management, and SNMP.

Patton's OnSite 2300 offers the versatility and reliability demanded for business-class applications at the most affordable price.

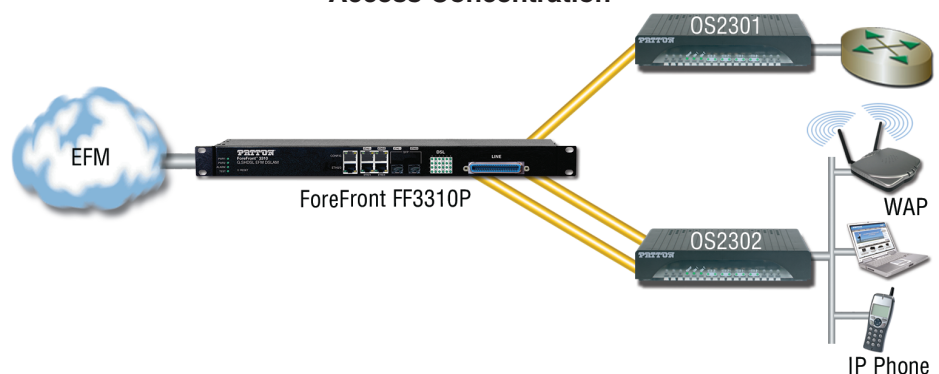
Visit www.patton.com for more information.

Typical Applications

Extension and Point-to-Point



Access Concentration



- The Model OS2300 G.SHDSL.bis CPE excels in manageability even in point-to-point configurations.
- Plug 'n' Play automatically configures a remote unit based on parameters stored in the local unit.
- Secure console lets an operator log into a unit to manage and configure it locally.
- Remote console makes configuration and management of a remote unit easy over an out-of-band channel.

OnSite™ Model OS2300 EFM CPE



Specifications*

G.SHDSL (ATM/EFM)

- Support ITU-T G.991.2/G.994.1 standards
- Support ITU-T G.998.1 (G.bond)
- TC-PAM line modulation 16,32,64 & 128
- CO or CPE Mode
- IEEE 802.3 2Base-TL (aka 802.3ah) compliant
- Rate negotiating/manually rate adaptation configuration
- 2-to-4-wire mode auto-detect
- Data rate selections: Up to Nx239 (15.3 Mbps) per pair
- Support bonding based on EFM
- Line interface: up to 2 pairs on a single RJ45 connector

Physical Features

4 port Fast Ethernet Base-T 10/100
1 RJ45 G.SHDSL port for EFM transmission (1 or 2 pair)

Front Panel LED Status Indicators

WAN: Link, LAN
(Ethernet): Link/Act, Power

Line Interface

Transformer coupled, 1500 VAC isolation

Management Features

- Switching and Quality of Service
- IEEE 802.1D
- 802.1Q/802.1P

- Link Scheduling
- DHCP Client/Server/Relay
- SNMP v1, v2, v3
- Telnet/SSH/RS-232
- HTTP/HTTPS/ Provisioning
- TFTP, HTTP & HTTPS file management

MTBF

4.7 years

Power

External 90–260 VAC, 50–60 Hz
(Universal Input), 5 VDC input

Power Consumption

0.8A@5V

Operating Temp.

32 to 122°F (0 to 50°C)

Humidity

5 to 95%, noncondensing

Altitude

0 to 15,000 ft (0 to 4,600 m)

Dimensions

4.7 x 1.52 x 5.00 in.
(119.4 x 38.6 x 127 mm)

Weight

2.0 lbs (1.0 kg)

Compliance

FCC Part 15A, CE Mark per EMC
directive 89/336/EEC and Low
Voltage Directive 73/23/EEC

G.SHDSL.bis EFM Products Available

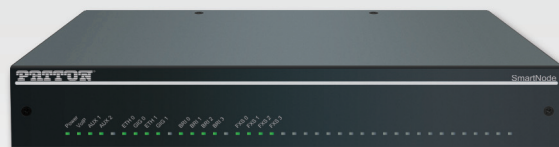
OnSite™ Model OS3300 G.bis EFM IAD



ForeFront™ Model FF3310P G.bis EFM DSLAM



SmartNode™ Model SN5550 Series BRI/FXS eSBC



SmartNode™ Model SN5570 eSBC + Router



* Specifications subject to change without notice.



Patton Electronics Co.
7622 Rickenbacker Drive
Gaithersburg, Maryland 20879, USA
Phone +1 301 975 1000
Fax +1 301 869 9293
E-mail sales@patton.com
Web www.patton.com

Patton-Inalp Networks AG
Meriedweg 7
CH-3172 Niederwangen, Switzerland
Phone +41 (31) 985 25 25
Fax +41 (31) 985 25 26
E-mail sales@inalp.com
Web www.inalp.com

Patton Hungary Zrt
Gábor Dénes utca 4., Infopark Building C
Budapest H-1117, Hungary
Phone +36 1 439 4840
Fax +36 1 439 4844
E-mail ce@patton.com
Web www.patton.com

07MOS2300-DS1