



FRM220-1000DS

1G 2R Multi-rate Transponder

The FRM220-1000DS is a fiber to fiber optical media converter and repeater that allows data rates up to 1Gbps. FRM220-1000DS supports 2R regeneration, which consists of re-amplification and reshaping. This converter is compatible with fiber interfaces such as 100Mbps Fast Ethernet and 1000Mbps Gigabit Ethernet, STM-1, Fiber Channel 1 and OC3. The FRM220-1000DS works as an FRM220 slide-in card, while the FRM220-1000DS plus FRM220-CH01 work as a stand-alone fiber converter. When the FRM220-1000DS card is placed in the FRM220-CH20 rack with SNMP management, the management can view the converter card's status, type, fiber link status and SFP DOM.

Features

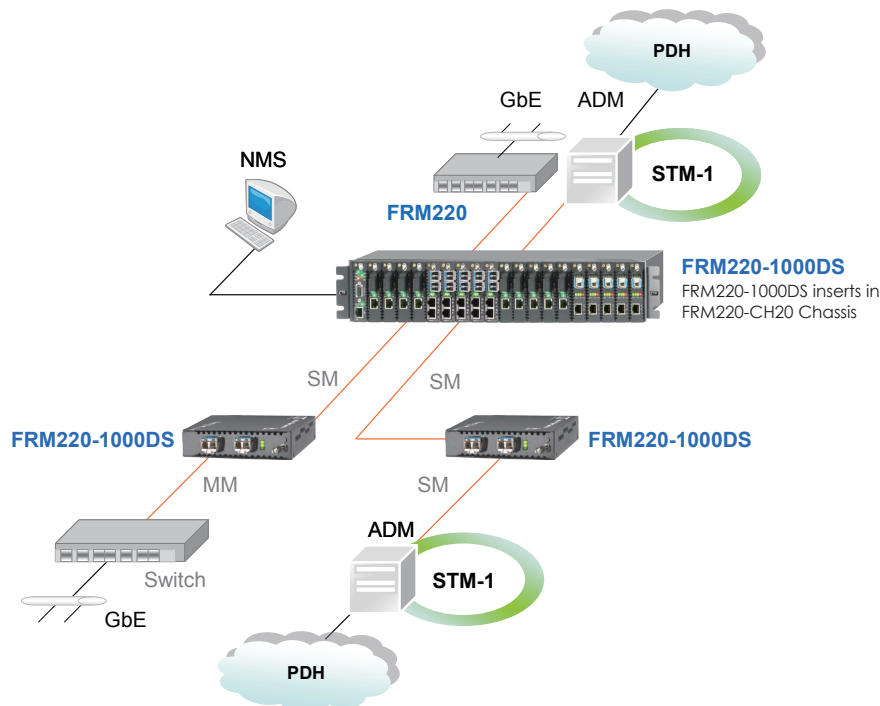
- Transparent FE or GbE fiber media converter / repeater
- Data rate up to 1G
- Device management via terminal or SNMP in FRM220 chassis
- Extend transmission from 2km to 120km over fiber
- Perform optical repeater function (Re-amplification & Reshaping)
- Digital diagnostic monitoring of SFP modules
- Supports Link Fault Pass-Through LFTP function
- Supports Auto Laser Shutdown (ALS) function

Specifications

Optical Interface	Connector	SFP LC x 2
	Data rate	Up to 1G
	Duplex mode	Full duplex
	Fiber	MM 50/125μm, 62.5/125μm. SM 9/125μm
	Distance	MM 550m, 2km, SM 15/30/50/80/120km
		WDM 20/40/60km
	Wavelength	MM 1310nm, SM 1310,1550nm WDM 1310Tx/1550Rx (type A) 1550Tx/1310Rx (type B)

Indications	LED (Power, FX-Link1, FX-Link2)
Power Input	12VDC
Power Consumption	< 6W
Dimensions	Card: 155 x 20.8 x 88 mm (D x W x H)
Weight	130g
Temperature	0 ~ 50°C (Operating), -10 ~ 70°C (Storage)
Humidity	10 ~ 90% non-condensing
Certification	CE, FCC
MTBF	65,000 hrs

Application



Ordering Information

Model Name	Description
FRM220-1000DS	1000Base-X SFP to 1000Base-X SFP Media Converter card (Optional SFP)

Note: This Card is suitable for use in CH01 standalone chassis